

MONTHLY MEMBERSHIP PROGRESS REPORT

DISTRICT 3241 C

Results as of: 5/31/2026

GMT:

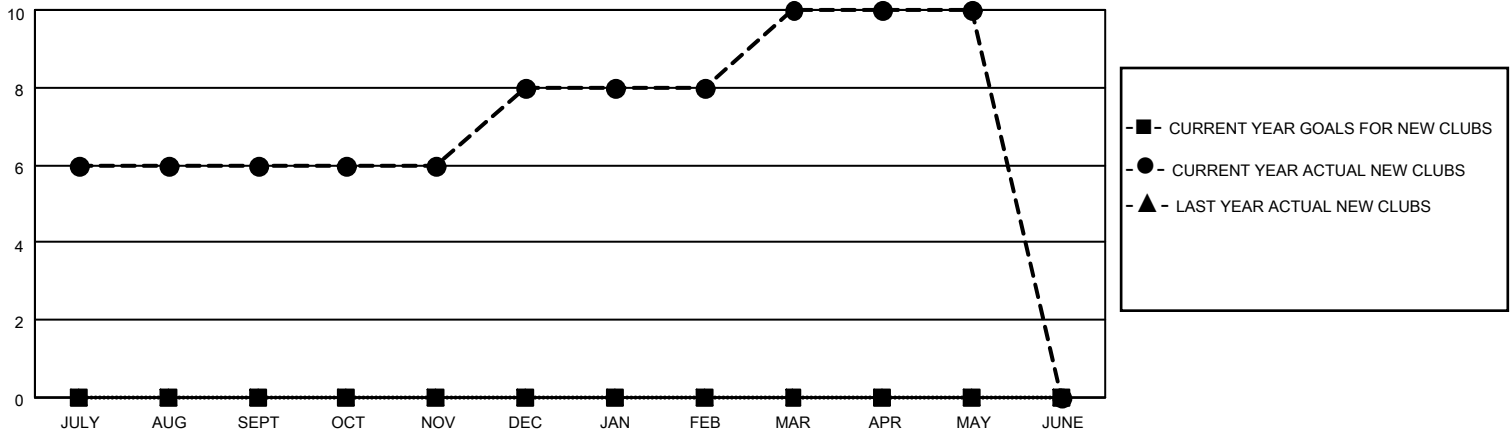
LOCATION INDIA

GMT CA

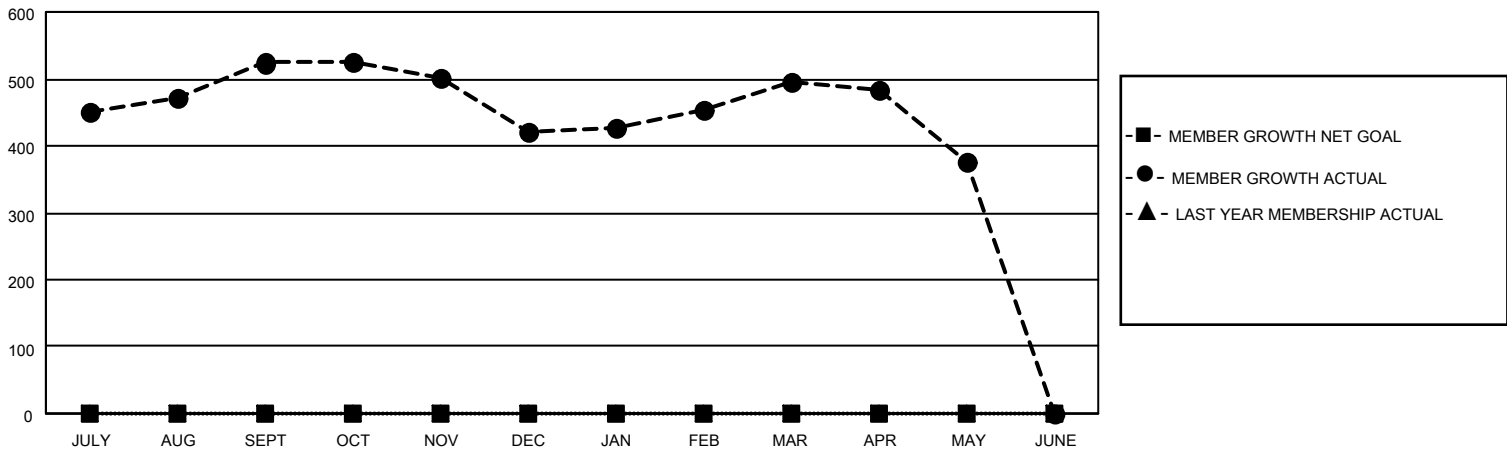
| Clubs | | | |
|-----------------------|---------------|-----------|---------------|
| RESULTS FOR 2025-2026 | | | |
| QUARTER | NEW CLUB GOAL | NEW CLUBS | DROPPED CLUBS |
| JULY/AUG/SEPT | 0 | 6 | 3 |
| OCT/NOV/DEC | 0 | 2 | 3 |
| JAN/FEB/MAR | 0 | 2 | 2 |
| APR/MAY/JUNE | 0 | 0 | 0 |

| Members | | | |
|-----------------------|------------------------|----------------------|--|
| RESULTS FOR 2025-2026 | | | |
| QUARTER | MEMBER GROWTH NET GOAL | MEMBER GROWTH ACTUAL | DROPPED MEMBERS ACTUAL (including transfers) |
| JULY/AUG/SEPT | 0 | 631 | 82 |
| OCT/NOV/DEC | 0 | 150 | 226 |
| JAN/FEB/MAR | 0 | 213 | 62 |
| APR/MAY/JUNE | 0 | 101 | 204 |

GOALS AND ACTUAL NEW CLUBS CUMULATIVE



GOALS AND ACTUAL MEMBERS CUMULATIVE



DROPPED CLUBS: 8

154 CLUBS OF 185 ADDED 1 OR MORE NEW MEMBERS

GENDER DISTRIBUTION

MALE 4,051 (77.74%)
FEMALE 1,160 (22.26%)

DROPPED MEMBERS

| | |
|----------------|------------|
| DECEASED | 17 |
| CLUB CANCELLED | 97 |
| OTHER | 458 |
| TOTAL | 572 |

[CLICK HERE FOR CUMULATIVE MEMBERSHIP DATA](#)

| | |
|---------------------------------|-----|
| TOTAL FAMILY UNIT MEMBERS | 810 |
| FAMILY MEMBERS PAYING HALF DUES | 438 |